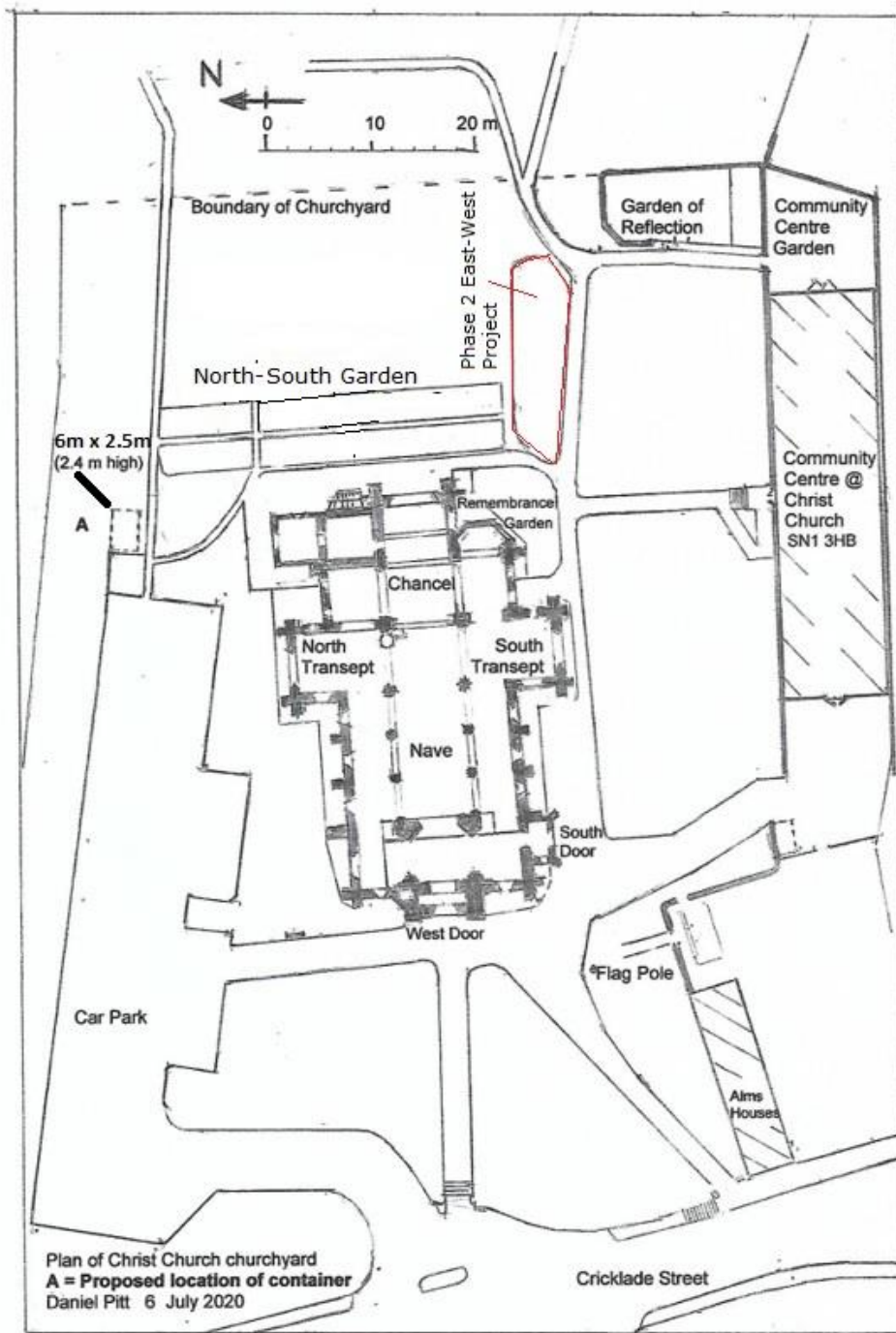


Phase Two – Jubilee Memorial Garden Renovation Project

Having successfully completed the first phase of our Memorial Garden renovation project (Application Reference:2020-055486), we wish to proceed with the remaining section of garden.

The remaining East- West section of the garden presents some major obstacles and given that the works involve a substantially different approach, we are asking for a preliminary review of our new proposals.



Location plan of the proposed works

For both projects, we continue to consult closely with local families, horticultural experts and design and landscaping professionals.

Our Objectives

To build on the success of the previous works.

To unify the two sections of garden to create a beautiful, more easily managed, accessible and reflective place for local families to visit and remember their loved ones.



Above- The overgrown East-West Section of the garden Summer and Autumn

The second image shows the site of the proposed path edge/ turf repair. The intention is to extend the grass from where it currently stops at the west end of the garden so that it joins with the grass edge of the North South section thus creating a continuous perimeter bring the two sections together. Any affected plaques will be relocated no more than 12 inches from their current position.



A section from the completed North South Garden showing the existing, high quality, turf and edging. This creates an attractive and easily maintained perimeter.

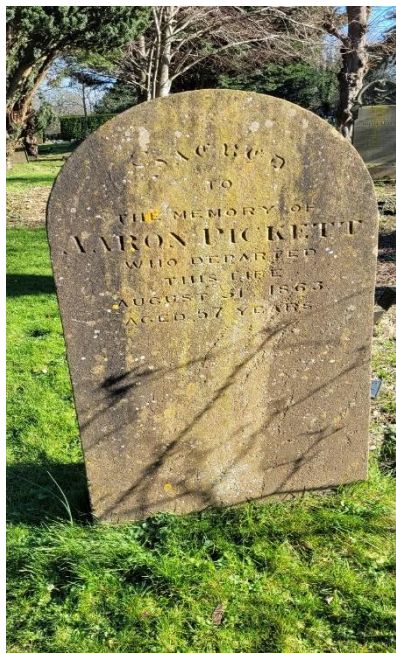


Picture showing the context of the proposed changes to the garden perimeter. Replacing and extending the turf edge to join up with the path at the West end of the garden.

The picture also shows the proposed position of a notice board. We would also like permission to site a permanent notice board in this position. This will enable us to keep visitors informed of the proposals and the works as they proceed. We have found this to be essential in carrying out the first half of the garden project.

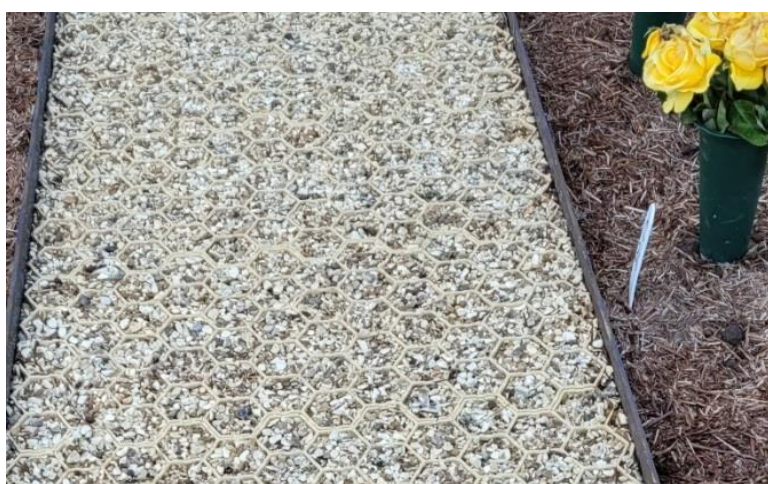
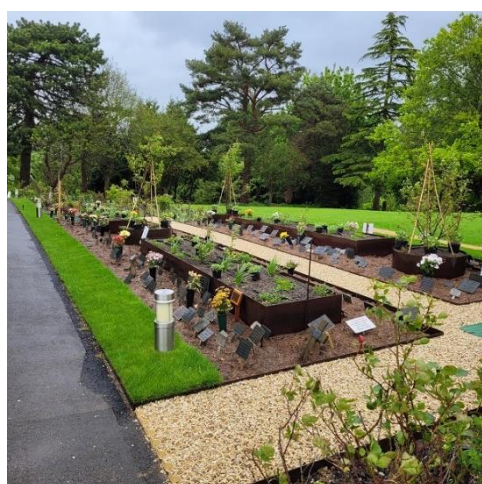
Gravestones

There are 3 gravestones dating from the 1860's that are in the way of our proposed gravel path along the north side of the garden. They are not particularly stable, and we would welcome the opportunity to lay them down close to their current position, to enable the path to run, uninterrupted, along the North side.



Paths

The path material selected for the first phase of the project has proved successful in providing secure, level access to visitors to the garden and we would propose to use the same materials in the new path. This uses a honeycomb base layer which, when mounted within steel edging, secures the gravel and provides a weatherproof nonslip surface.



Surfaces

As in phase 1 there will be no disturbance to the ground.

The centre of the garden will be levelled and a layer of “Walk Chips” applied. This allows all weather access to the beds and plaques in the centre and helps to reduce weeds. We have found that placing the plaques in a decorative layer of Strulch material provides an attractive, uniform base so this will be used, once again, contained by carefully laid steel edging at the perimeter of the garden. We provide vases for fresh flowers which can be embedded easily in the strulch.



Beds

As in phase 1, we will map the garden and record the positions of all the plaques. This record is made available to families via our on-line search capabilities. Whilst the majority of plaques are grouped around the outside of the garden there are also small groups of plaques marking burials in the centre of the garden. As the Lime tree roots grew, it became increasingly difficult to bury ashes, hence these pockets of rather random burials. We intend to add some circular steel beds and group these plaques in them. These can be planted with seasonal bulbs.



Noticeboard

Information about the Gardens is very important so we would like to site a noticeboard at the West end of the garden.

