

Christ Church Garden Appeal



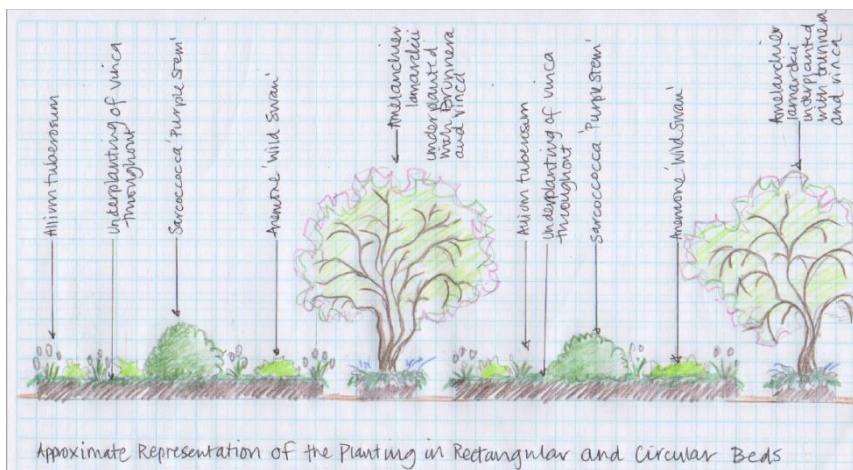
The memorial garden at Christ Church is a much loved and often visited area of the church yard. Over 1,300 loved ones are commemorated here. Over time and despite the best efforts of our volunteers, the former rose garden has become tired looking and sad.

With your help, we aim to create a beautiful, peaceful and safer garden that properly respects those generations of Swindonians whose ashes are buried there and is a fitting memorial for, and comfort to, those who visit throughout the year.

The new garden will be raised in a series of attractively edged rectangular and circular beds. This is to minimise the disturbance to the ashes of those remembered here and will help to revitalize the garden's soil. The memorial plaques will be carefully reinstated.



Our planting will be serene, with an emphasis on white flowering plants. Garden designer, Sue Spielberg, has selected plants and flowering shrubs to provide interest throughout the year, as well as attracting wildlife and pollinating insects to increase biodiversity.



Much of the planting will be evergreen to help maintain winter structure and will include scented plants. The whole scheme is designed to be simple to maintain to ensure the garden stays beautiful for years to come.

Bulbs such as snowdrops, crocus and species narcissus will be placed around the perennials to flower from late winter onwards.

What's next?

Following a period of public consultation and thanks to a generous private donation, permission was received from the church authorities and work began in February 2021 to prepare the ground for the installation of the raised beds.

This involves the, temporary, removal of the plaques to allow a weed suppressing mulch to be applied. It is hoped to complete the basic structure of the paths and garden by May 2021.

Church volunteers are meticulously recording the position of the memorial plaques, prior to their removal for cleaning and subsequent reinstatement in the new garden.

A new online database has been created to allow families or future genealogists to search the names of those remembered here.

You can find it here <http://bit.ly/gardenatcc>



How can I help?

Whilst we have had some generous donations to help us make a start on the garden, we will still need money to complete it and ensure that it is well maintained in the future.



You can make a real difference by donating towards the cost of reviving the memorial garden.

All donations, however large or small are equally welcome and gratefully received.

£600 pays for a raised bed with planting

£90 pays for planting a rectangular bed

£135 pays for planting a circular bed

£100 pays for a specimen shrub

£20 pays for 6 individual plants



Donations towards the garden are welcome via our Just Giving page <https://www.justgiving.com/campaign/rosegarden>

or

You can contact us via our Parish office (01793 522832) or via email: parishoffice@christchurchswindon.co.uk